

Men's Fashions - 1928 to 1931

By Marie Robinette

Updated 6/04

Men's fashions have always been a challenge for me and I'm sure for many of you too. It seems as though there just aren't enough of them around. A gentleman from the Model A era would save a long time to have enough money to buy a good suit. It usually was the suit that would also go to Church on Sunday, town meetings, weddings, and ultimately he would be buried in it.

These dapper men were very conscientious about their clothes. When dressing for a special occasion the men were just as discriminating as the ladies of the era. They coordinated their outfits from head to toe. And they chose wisely when it came to business wear, formal or informal wear, day or evening wear and lounge or country~ wear.

Styles for Men Spring and Summer 1930 was the inspiration for the following men's correct dress guide for all occasions.

FOR BUSINESS WEAR

Coat: Single or double-breasted sack coat, two or three buttons.

Waistcoat: Single or double-breasted, material to match coat. A double-breasted waistcoat should only be worn with a single-breasted sack coat.

Trousers: Same material as coat with or without cuffs.

Overcoat: Single or double-breasted Chesterfield, raglan or ulster for inclement weather.

Hat: Derby or Fedora.

Shirt: Soft of striped or fancy material.

Collar: Turn-down collar to match, or white.

Scarf: Four-in-hand.

FOR INFORMAL DAY WEAR

Coat: Single-breasted one or two button sack coat of black, Oxford or dark brown material.

Waistcoat: Fancy, either single or double-breasted with or without collar.

Trousers: Striped Cheviot trousering, the dark stripe to match the color of coat.

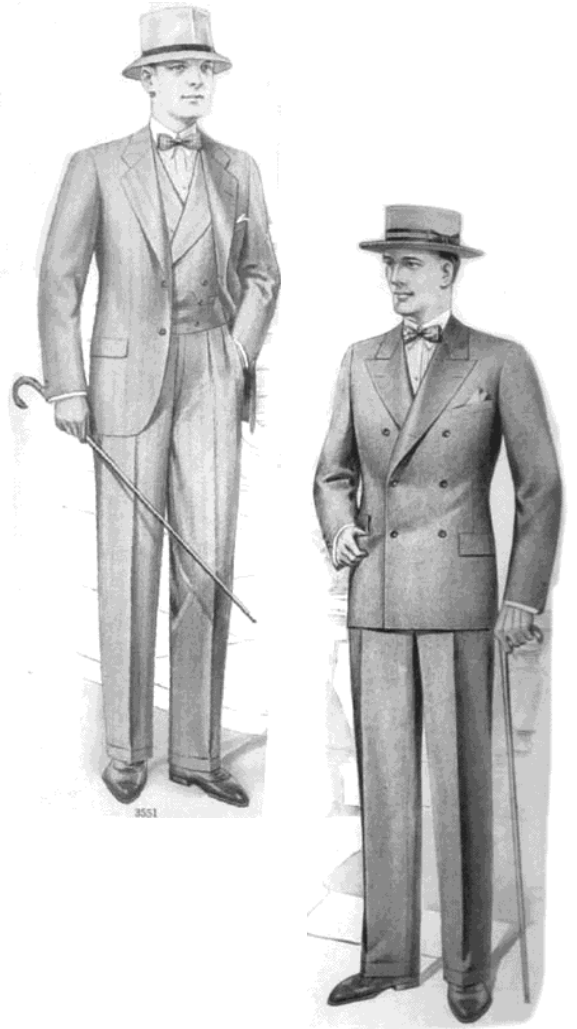
Overcoat: Single-breasted fly front or double breasted shapely of solid color material.

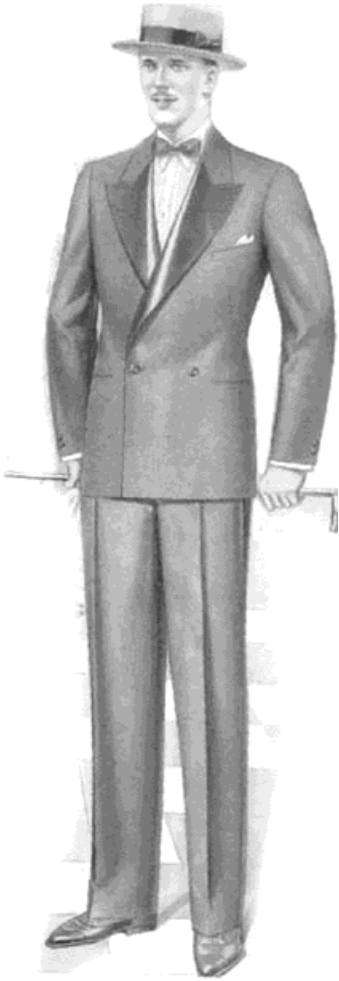
Hat: Black Derby

Shirt: White pleated bosom.

Collar: Wing.

Scarf: Bow tie of black with white stripes or four-in-hand the same color.





FOR FORMAL DAY WEAR

Coat. Single-breasted frock, one or two-button style of either black, midnight blue or Oxford.

Waistcoat. Either single or double-breasted of either the same material as the coat or of fancy material in pearl gray or white.

Trousers: Striped Worsted.

Overcoat. Single or double-breasted shapely of either blue, brown, black or Oxford, or a Paddock overcoat.

Hat. Derby or Silk.

Shirt: White pleated bosom.

Collar. Wing.

Scarf. Either black and white stripe bow or four-in-hand the same color.



FOR INFORMAL EVENING WEAR

Coat. Tuxedo, single or double-breasted.

Waistcoat. Black single or double-breasted.

Trousers: The same material as the coat.

Overcoat. Black or Oxford Chesterfield or double breasted overcoat with velvet collar or Paletot.

Hat. Soft Felt or Opera

Shirt. stiff bosom or white pleated.

Collar. Wing or polk.

Scarf. Black bow.

FOR FORMAL EVENING WEAR

Wedding, Ball, Formal Dinner, Theatre Party, Reception or Opera.

Coat. Evening dress coat.

Waistcoat. White washable, single or double-breasted.

Trousers: The same material as coat.

Overcoat. Inverness, Chesterfield or double-breasted Paletot with velvet collar.

Hat. Silk or Opera

Shirt. Stiff bosom or plain.

Collar White wing or polk.

Scarf. White bow.



LOUNGE OR COUNTRY WEAR

Golf, Riding, Motoring, Etc.

Coat. Norfolk or sport, single-breasted.

Waistcoat. Single-breasted of same material as jacket or fancy for riding.

Trousers: Same material as sack coat.

Breeches: Knickerbockers or Jodhpurs may be of contrasting material.

Overcoat. Full box raglan or deep arm-hole slip-on.

Hat. Soft Felt, cap or straw in Summer.

Shirt. White or colored.

Collar. Same as shirt, soft or semi-soft, low, turndown.

Scarf. Four-in-hand, bow or once-over.

GLOSSARY

Bow tie - a man's tie; ties in a bow

Chesterfield - a fitted overcoat with a velvet collar

Cheviot - hardy hornless sheep of the Cheviot hills noted for its wool

Derby - a hat that is round and black and hard with a narrow brim; worn by some British businessmen

Fedora - felt hat with a creased crown

Homburg - felt hat with a creased crown

Inverness - a kind of full sleeveless cape, fitting closely about the neck

Jodhpur - a short riding boot that fastens with a buckle at the side

Knickerbockers - trousers ending above the knee

Opera - a man's hat with a tall crown; usually covered with beaver or silk

Oxford gray - a very dark gray color

Norfolk jacket - loose-fitting single-breasted jacket

Paletot - an overcoat

Sack coat - man's hip length coat with a straight back; the jacket of a suit coat - an outer garment that has sleeves and covers the body from shoulder down; worn outdoors

Tuxedo - semiformal evening dress for men

Ulster - loose long overcoat of heavy fabric; usually belted

Worsted - a tightly twisted woolen yarn