

Reproduction of Era Lounging and Beach Pajamas
By Maxine Dust
Era Fashion Committee



Figure 1: Woman's Home Companion October 1929 cover demonstrates that during Era times as is true today, women were using patterns and magazines for instruction and inspiration to create their own garments for themselves or others.

Reproduction of Era Lounging and Beach Pajamas



Figure 2: Reproduction of Era fashions requires some research. Original patterns can sometimes still be found at Swap meets or antique stores. The original pattern shown here is for Beach pajamas - copyright 1929 - McCall's. There are also a limited number of original patterns available for temporary use by contacting: Pat Watson, 20124 Beach Drive NW, Stanwood WA 98292.

When sewing Era garments, it is important to use colors, fabrics, and sewing methods used at that time in order to achieve the actual "era look" if so desired. This information is available in "The Fashion Guidelines", available through MAFCA, 250 S. Cypress Street, La Habra, CA 90631-5515 among other places. Attention to details regarding accessories etc. is also suggested.

Reproduction of Era Lounging and Beach Pajamas



WIDE TROUSERS

Are the Newest Flair in Beach Pajamas

THE beach pajamas at the left are copied from a Patou model, sponsoring the capucine shades for the trimming on the jumper and for the print of the coat. The trousers are of wood brown fat crepe and the jumper is of beige. An interesting treatment is accorded the wide trousers in a group of inverted pleats on the side of each leg. (Violet Slomo, Inc.)

Two fashion trends are incorporated in a pajama ensemble which combines an eggshell silk crepe sunback jumper with a green and eggshell gingham-checked coat. The wide trousers of imperial green fat crepe are slit to

the knees. (Dan Friedlander, Inc.) A chartreuse satin coat tops a maize satin pajama in a three-piece ensemble which is distinguished by fabric buttons of orange satin.

A two-piece ensemble of white silk pique exploits the favorite sailor costume details in a collar trimmed with navy blue braid, a tie, and an emblem on the pocket. (Two from A. Miller & Co., Inc.)

Geranium red and white are effectively combined in a fat crepe ensemble which adopts white trousers and jumper trimmed with red silk stitched on in a stripe effect, and a red coat lined with white. (Japanese Silk Garment Co.)

Figure 3: Beach pajama ensembles - "Style Sources" 1929 issue featuring wide trousers showing the backs of these garments as well as the fronts and listing color choices which would have been available.

Reproduction of Era Lounging and Beach Pajamas



COLOR AND CONTRAST

Lend a Vivid Quality to the Beach Ensemble

THE contrast of black and white is illustrated in a jersey beach ensemble illustrated on the left, with sunback top, yoked trunks and knee-length matching coat. (Calvaire, Inc.) The adjoining costume matches a scarf print silk umbrella to a beach coat which combines monochrome linen with the same silk scarf print. (Beutinson & Cede, Inc.)

The third figure presents an ensemble in printed crepe and solid color jersey, the suit being in tunic type. (Herbert Kahn, Inc.) On the right, a beach ensemble is developed in rubberized terry cloth, consisting of bag, cap and coat. The coat combines rubberized silk with the terry. (I. B. Kleinert Rubber Co.)

Figure 4: Beach pajama ensemble - "Style Sources" 1929 issue shows the beach ensemble in short skirts and yoked trunks. The accompanying paragraph goes into much detail regarding fabric and colors. "Terry cloth" for fabric choice is also listed.

Reproduction of Era Lounging and Beach Pajamas

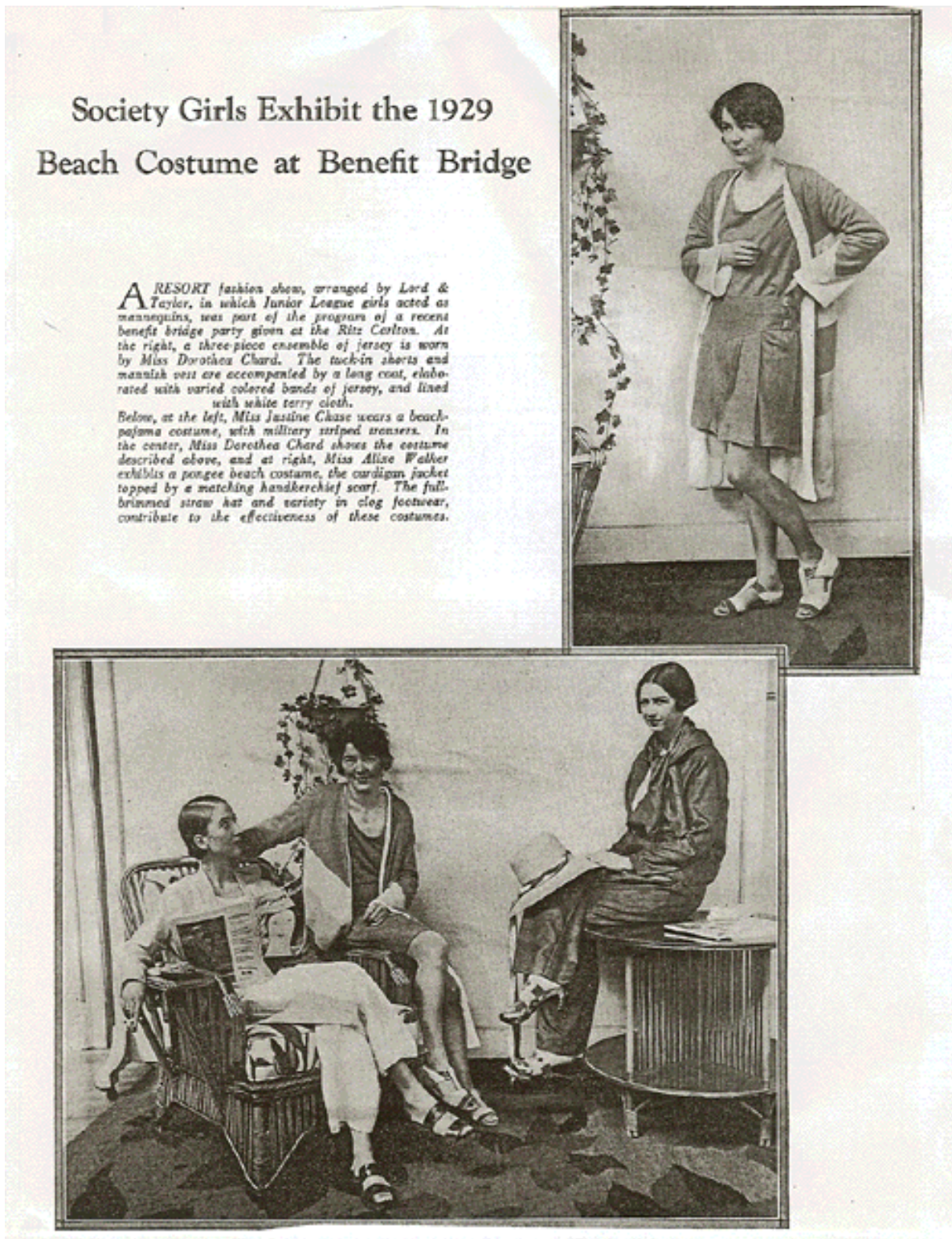


Figure 5: Actual photographs depicting women wearing Beach costumes for a "Benefit" occasion. - "Style Sources" 1929 issue.

Note: "Style Sources" was a magazine published for retail establishments that may have sold these fashions.

Reproduction of Era Lounging and Beach Pajamas



For Your Leisure Hours

Figure 6: A more sophisticated Lounging Pajama ensemble is depicted in a Chinese motif as shown in "Ladies Home Companion", October 1929.

Reproduction of Era Lounging and Beach Pajamas



Figure 7. Patterns from "Pictorial Review Quarterly" Fall 1930 shows a variety of styles for lounging/beach pajamas which could have been constructed by the home seamstress. It also demonstrates hair-dos and foot-wear for that time period.

Reproduction of Era Lounging and Beach Pajamas



Figure 8: To achieve the "Era" affect for fun, it may be necessary to draw form a variety of current patterns that may be available. It may also may be necessary to use the body of the garment from one pattern, sleeves from another, etc. These are only suggestions and the author takes no responsibility in this matter.

Pictured are:

1. "See and Sew" #5803 - copyright 2001 - Butterick Co. Inc
2. "See and Sew" #B4270 - copyright 2004 - McCall Pattern Co.
3. "Simplicity" #5725 - Copyright 2002 - Simplicity Pattern Co.

#####